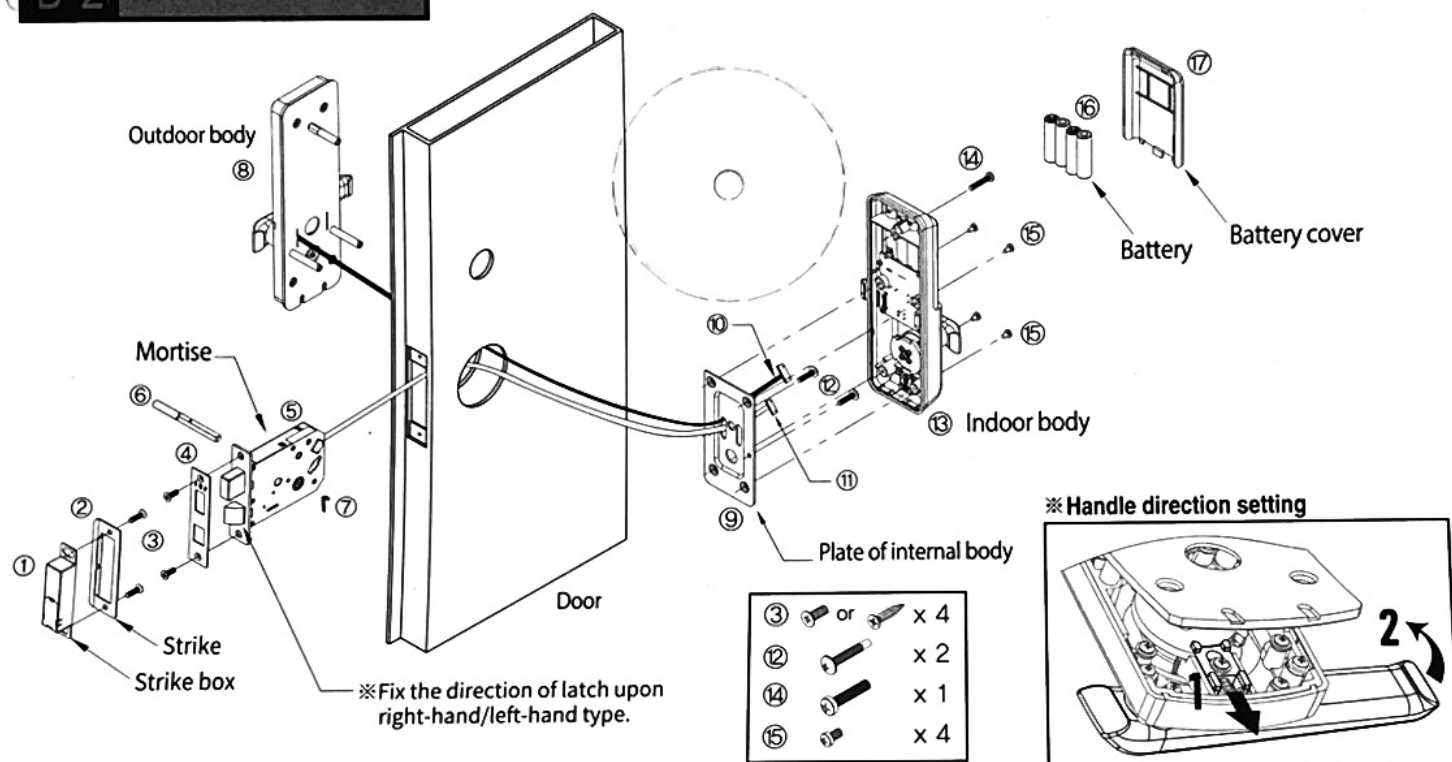
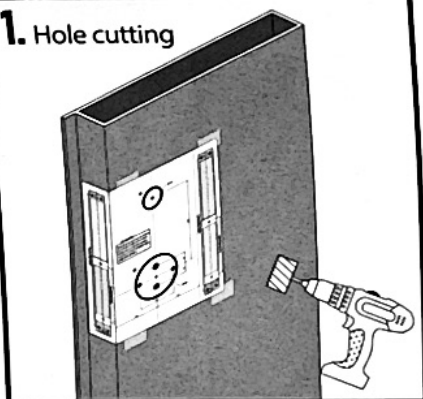




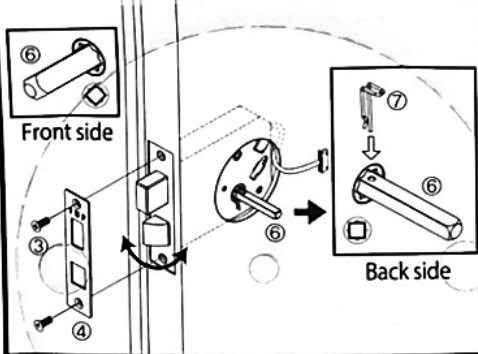
# B-2 Installation order Ver. 3.0



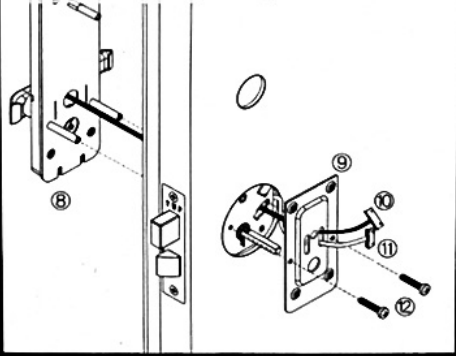
## 1. Hole cutting



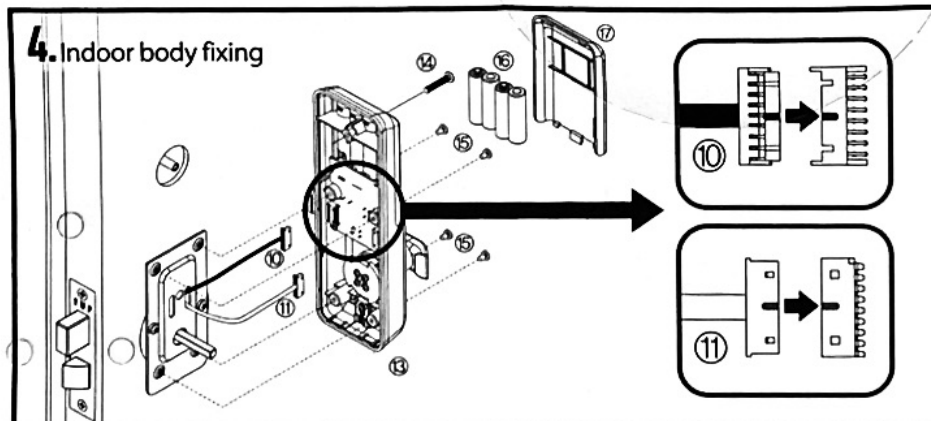
## 2. Mortise fixing & latch direction setting



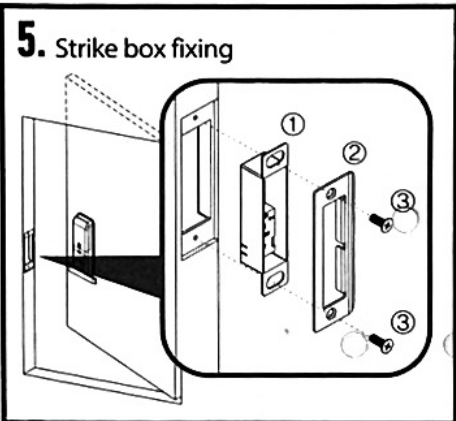
## 3. Outdoor body fixing



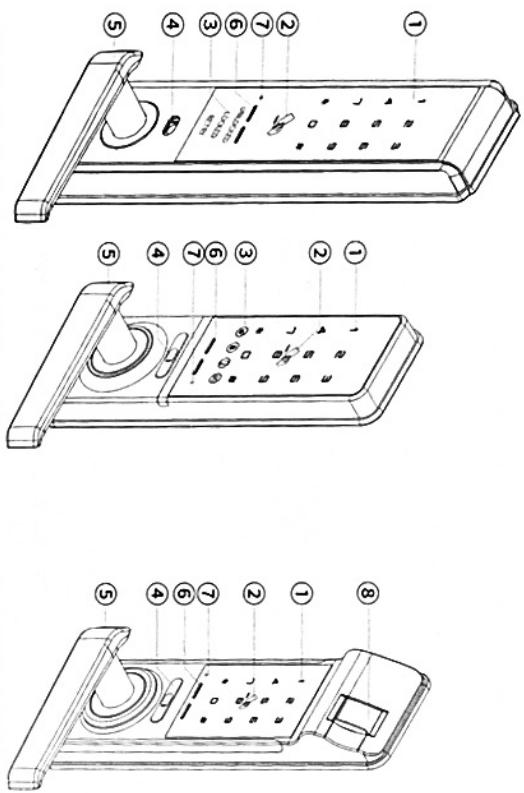
## 4. Indoor body fixing



## 5. Strike box fixing



- **Outdoor body** (Types and colors of outdoor body will differ depending on the model.)



Touchpad type B

Fingerprint recognition type

- ① Touch keypad
- ② Card/Key tag input part (Applied model)
- ③ External alarm lamp (Applied model)
- ④ Emergency Key Hole
- ⑤ Handle
- ⑥ 9V emergency power supply socket
- ⑦ Reset button
- ⑧ Fingerprint input

- **Basic components** (Check if your product contains all contents.)

1 outdoor body / 1 indoor body / 1 Mortise (latch)  
Strike box 1 set / 1 user manual / 1 installation guide  
Bolt set / 4 AA batteries (Alkaline)

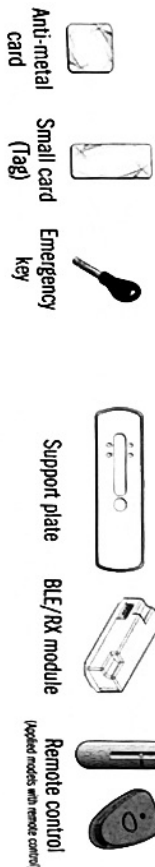
## Caution



※ Remove the protection tape on the touch pad after digital door lock installation

- **Extra accessories** (Applied model)

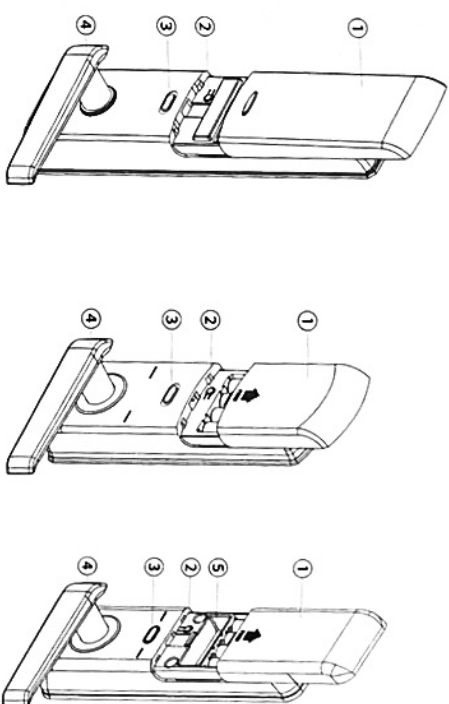
- **Optional accessories sold separately**



※ Basic components (Extra accessories) and its quantity may differ depending on the product model (Opening/closing function)

※ Types and colors of card/key tag (Remote control) may change.

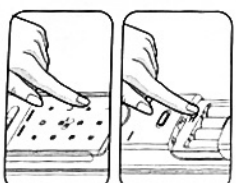
- **Indoor body** (Types and colors of indoor body will differ depending on the model.)



- ① Battery cover
- ② Input button ( ) : When you register or delete your password, use the card/key tag and the remote control.
- ③ Open/Close button : Use open/close button to open or close the door in the room.
- ④ Handle
- ⑤ BLE/RX Module socket : \* BLE : User manual is provided separately.  
\* RX for remote controller : See below instruction on how to use remote controller.

# 1. Master Mode

## Set in Master Mode



**A. Setting master control password** : Inputting Master control password is required when change password or register/delete cards/remotes.

1. Press "Input button" in the indoor body.
2. Press "0" and "#" in order.
3. Register anew master control password. (3-19digits)
4. Press "\*" button to complete. "Ding-dong" for success / "3 short Beep" sound for failure will occur.

## B. Changing master control password

1. Press "Input button" in the indoor body
2. Enter the Master control password and "\*" button.
3. Press "0" and "#" in order.
4. Register anew master control password. (3-19digits)
5. Press "\*" button to complete.

※ In the state of Master mode, it always make two short beep sound whenever "Input button" is pressed.  
※ Master control password can be used to unlock the door like the same way of user password.

## Registering/Changing User Password In Master Mode

### A. Registering User Password

1. Press "Input button" in the indoor body. (two short beep sound)
2. Enter the Master control password and "\*" button.
3. Register User password and "\*" button to complete. "Ding-dong" for success / "3 short Beep" sound for failure will occur.

### B. Changing User Password

※ Change password in the same way as above. ※ When registering new password, previous password is automatically deleted.  
※ Caution : Make sure that a door keeps being open when registering/changing password.  
Default factory password is set to "1234" Please update the password after installation.

- To go to the next stage, perform it before the lamp turns off (within 15 seconds).